

Thinking outside the box

Extending this 1930s building into the garden has opened up the house with outdoor views

Photography Sarah Blee

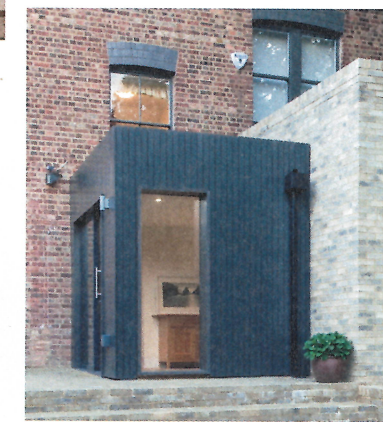
HOME PROFILE

PROPERTY DESCRIPTION
This large family house dates back to the 1930s and has been extended to create more living space

LOCATION
Aberdeen Park, Islington, London

PROJECT COMPLETED
Summer 2017

Connecting the downstairs rooms and linking the indoors with the outdoors has created a newly cohesive feel in this 1930s house. Studio 54 Architects were asked to upgrade the ground floor which had a layout that didn't suit modern family living. They designed the extension to add extra space and allow more natural daylight into the back of the house, illuminating the private living spaces. The extension involves two linked volumes which naturally enclose a new patio, leading onto the garden. The larger volume is built with brick and offers the owners more room in their kitchen. To make the most of the views looking out from the dining area, the architects allocated space for a wide picture window with measurements of 3.5m x 1.9m.



PROJECT NOTES

ARCHITECT
Studio 54
Architecture
studio54architec-
ture.co.uk

CONTRACTOR
Catalin London Ltd

STRUCTURAL ENGINEER
Hardman
Structural
Engineers

GREEN ROOF
Organic Roofing
Company,
Lee Evans

WINDOWS
HV Joinery

ARCHITECT'S QUESTIONS

What materials have you used and how have you defined the spaces?
We designed the extension as two linked volumes which step up from the entrance to the living room. The larger volume is brick and enlarges the kitchen. The smaller is clad in black-stained timber and sits below the landing window on the axis of the front door (with a tall window providing a view through the house into the garden). This creates a transition space between the courtyard and the dining room.

What was the biggest challenge you came across with this project?
The challenges were to respond sensitively to the client's brief (which inevitably changes as options are explored), to provide architectural solutions which the client could not have anticipated on their own, to create beautiful spaces, to build within a budget and to remain friends.

How have you worked with the original building and been sympathetic to it?
The existing building was quite austere at the back, facing the large garden. None of the living spaces connected well with the garden, either visually or spatially. As well as resolving the dark and poorly planned kitchen we wanted to connect the living spaces positively to the garden. This included creating a hard-paved, open courtyard opening directly off the living room and the dining room for informal sitting and dining. The form of the extension has been articulated as two forms: a larger brick box enclosing the main dining area (with the large picture window) and a lower black stained timber box (which avoids clashing with the existing first floor landing window). A vertical window sits on the main axis running through the house, giving an immediate glimpse of the garden from the front door.