



Extension in brick and flint by Paul Archer Design to Guildford Lodge, gatehouse of Charles Barry's Gothic Revivalist Horsley Towers in Surrey. See case study, page 16

CONTENTS

Leader Jon Astbury	2
On the radar compiled by Jon Astbury	4
AJ Buildings Library New Mission Hall by Adam Richards Architects	6
In practice Amin Taha on two projects exploring post and lintel construction in stone	8
Guildford Lodge Paul Archer Design	16
Wilkins Terrace Levitt Bernstein	30
Chadwick Hall Henley Halebrown	44
BCIS costs Nang Mung and Clive Rowe break down sample costs for bricks, blocks and stone	54
Drawing to a close Marble tile patterns on the floor of Siena Cathedral sketched by architect George Saumarez Smith	64
Cover View of Levitt Bernstein's Wilkins Terrace at UCL in Bloomsbury, central London. Photograph by Ben Blossom	

CONTACT

AJ Specification
Telephone House, 66-77 Paul Street, London EC2A 4NQ 020 3033 2736
Enquiries
Email firstname.surname@emap.com Telephone 020 3953 (plus extension)
Editor Rob Wilson (2812)
Assistant architecture editor Jon Astbury (2857)
AJ editor (maternity cover) Emily Booth (2721)
AJ editor-in-chief Christine Murray (mat. leave)
AJ managing editor Will Hurst (2990)
Production editor Alan Gordon (2656)
Deputy production editor Simon Aldous (2002)
Art director Ella Mackinnon (2738)
Graphic designer Ana Schefer

Commercial director James Priest (2923)
Account director Hannah Buckley (2941)
Senior account manager Francesca Verduco (2660)
Senior event manager Candice Duckett (2648)
International account director Caroline Londono (2741)
Business development manager Elizabeth Burke (2863)
Production manager Laura Barretto (2684)
Editorial assistant Rupert Bickersteth (2055)
Editorial director Paul Finch
Managing director Richard Baker



All rights reserved © 2017 The Architects' Journal
An EMAP service. Printed by Henry Stone Ltd, Ashford
Registered as a newspaper with the Post Office
ISSN 1748-8675



When you have finished with
this magazine please recycle it.

GUILDFORD LODGE BY PAUL ARCHER DESIGN

Photography by Will Pryce





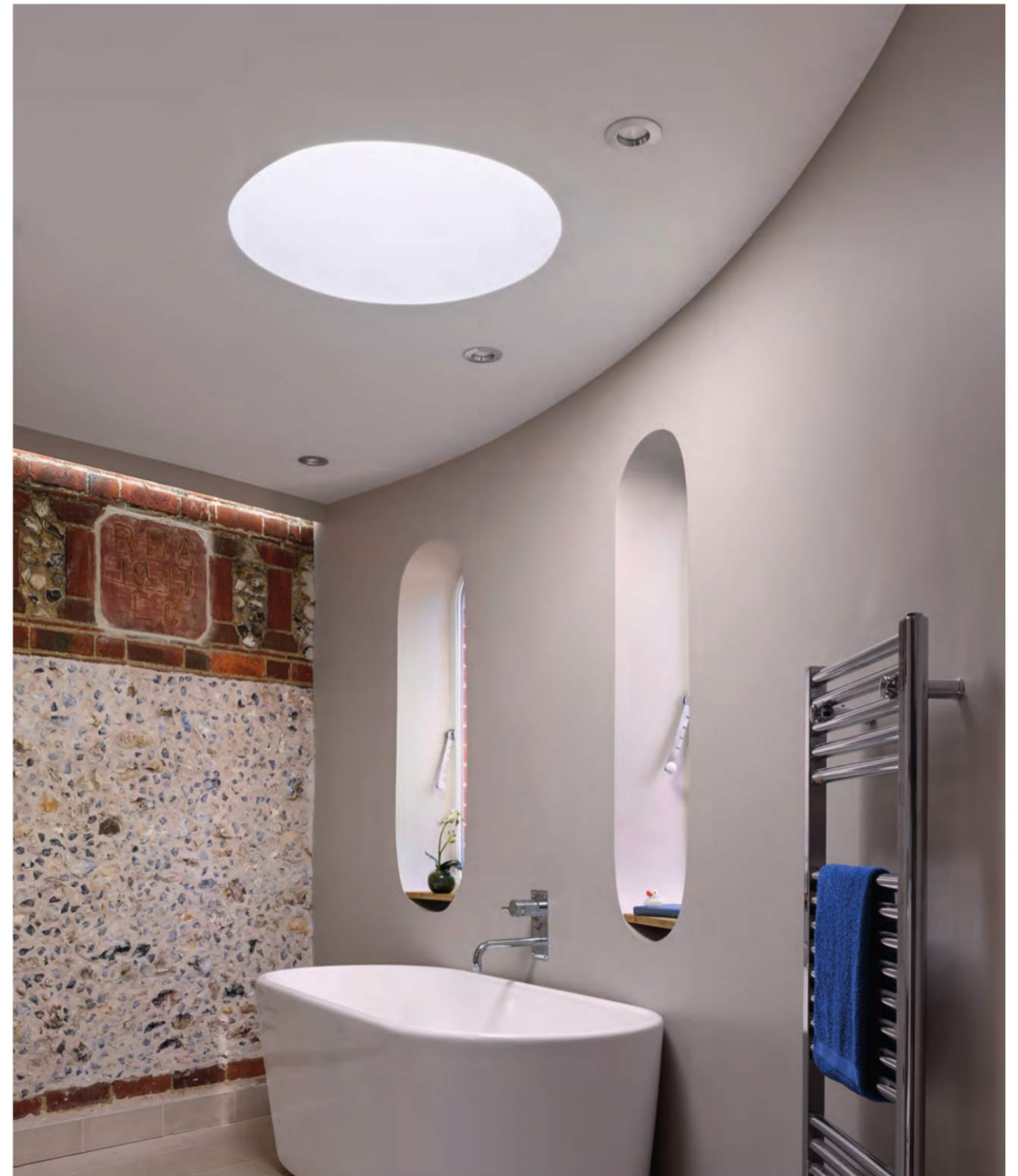
The Grade II-listed former gatehouse to the elaborate and eccentric Horsley Towers estate in East Horsley, Surrey, Guildford Lodge had been a family home for some time. But its unusual form, straddling a large archway, with a series of small rooms connected by a narrow spiral stair, made it difficult to inhabit. A thorough reorganisation was needed, opening up the existing ground floor into a more modern living space and adding a new bedroom and bathroom to the first floor in an extension that echoes the forms and detailing of the original building.

Robert Sterry, associate, Paul Archer Design

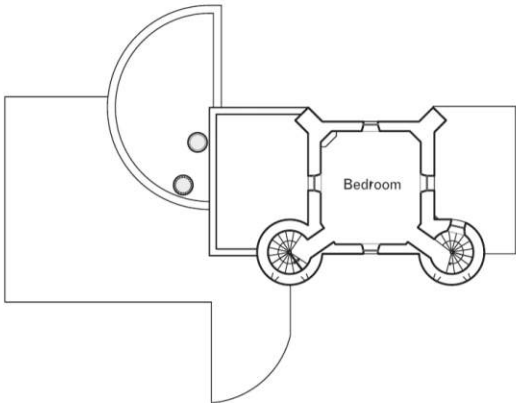
Project data

Start on site February 2015
Completion June 2017
Gross internal floor area 165m²
 (ground and first floor)
Form of contract JCT Minor Works
 with Contractors Design Portion
 2011/Traditional
Construction cost £200,000
Construction cost per m² £1,200
Architect Paul Archer Design
Client Nick Hardy and Andrea
 Beaton
Structural engineer Hardman
 Engineers
Approved building inspector BBS
 Building Control
CDM co-ordinator
 Paul Archer Design
Main contractor Jim Rogerson
 Building Contractors
CAD software used Vectorworks

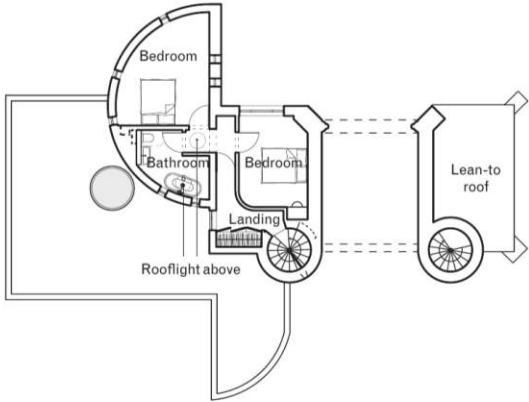




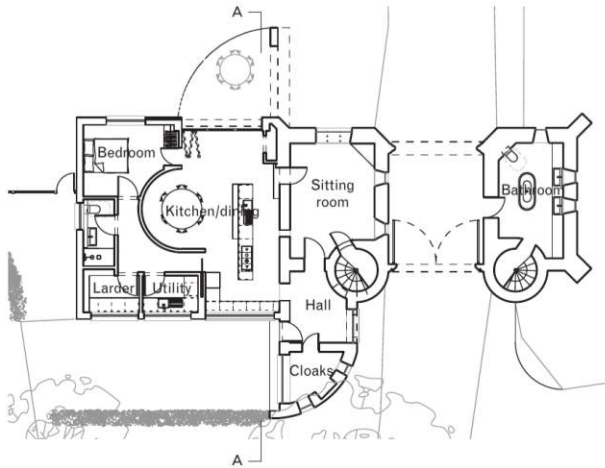
Second floor plan



First floor plan

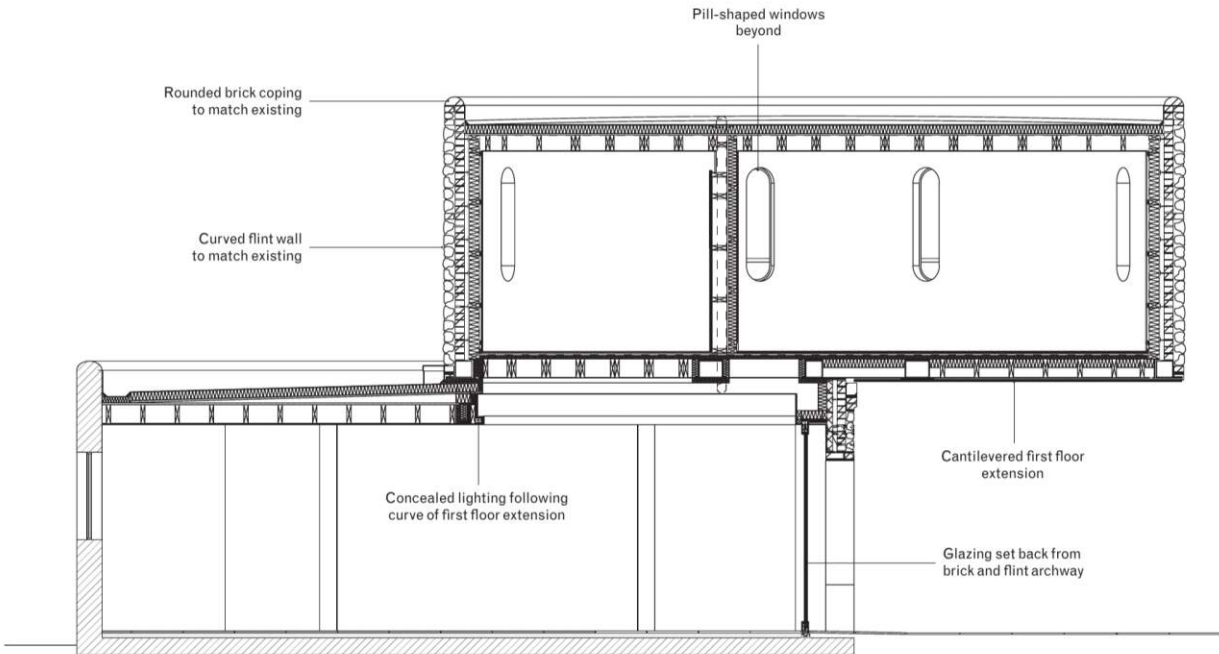


Ground floor plan

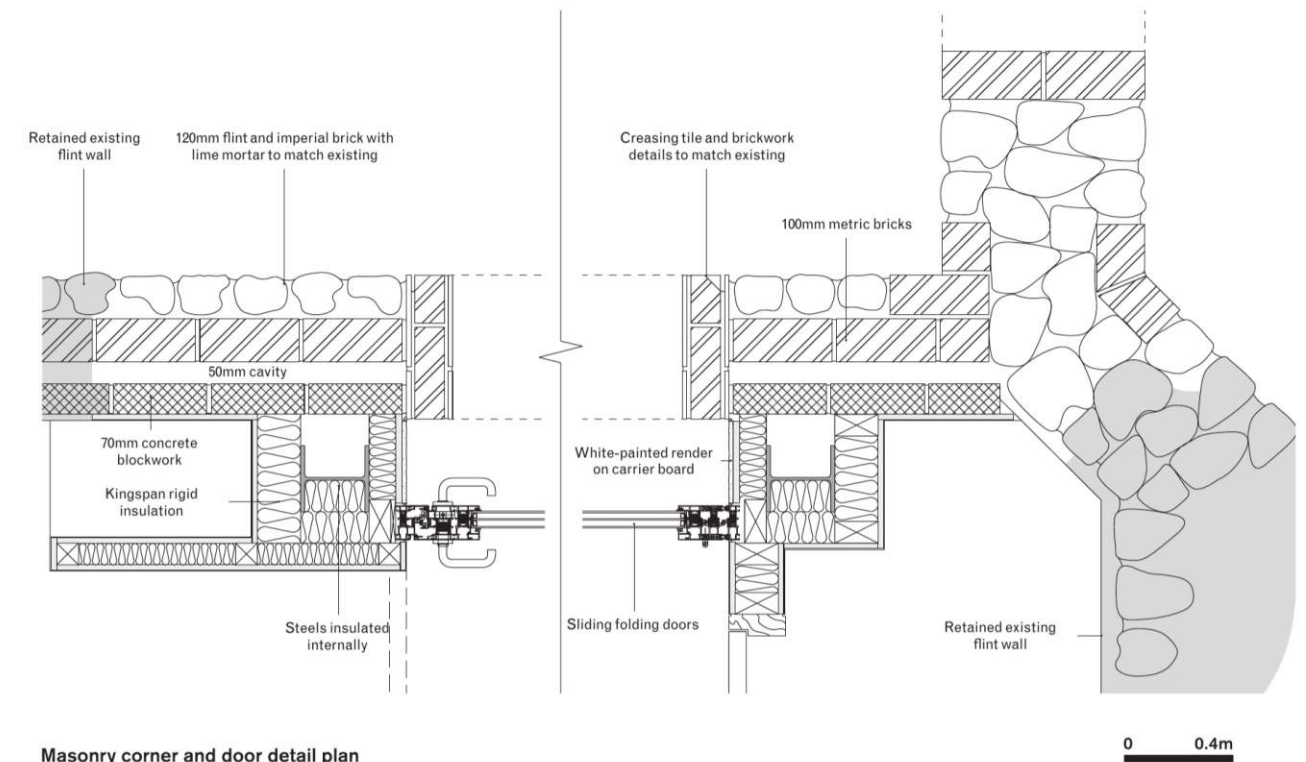


0 2m

Section A-A



0 1m



Masonry corner and door detail plan



Specification

The success of the project relied on use of local materials, such as the flint and brickwork, in balance with modern methods of construction to help achieve a building that was fit for modern day living standards.

Internal load-bearing timber studwork used in construction of the curved first floor wall would improve the building's thermal performance while reducing the weight of the external wall, which is supported by a curved, cantilevered steel beam below. This would allow its steel beams to be concealed behind the flint and red brick façade.

Although we had access to plenty of flint, the bricks would prove difficult to match to the existing as the original brick supplier, Ockham Brickworks, had long since ceased production.

Nevertheless we closely matched the existing stock with new red bricks and a matching chamfered brick for window surrounds, plus a blue-black bullnose coping. This gives a simpler, less fussy appearance to the addition and helps differentiate it from the original without creating too much of a contrast.

The re-building of the flint and brick walls at ground level meant we had to replicate the existing un-insulated construction. This aided the decision to set the new bi-fold doors inside the arched ground floor opening, which would provide much-improved thermal performance but also allow views of an uninterrupted brick arch when opened.

*Robert Sterry, associate,
Paul Archer Design*

SAMPLES BOARD

Photographed by Ståle Eriksen

1. **Red chamfered brick**
to window surrounds by Michelmersh
Brick Holdings
www.mbhplc.co.uk
2. **White render**
to building envelope
3. **Blue bullnose coping brick**
to building envelope by Michelmersh
Brick Holdings
www.mbhplc.co.uk
4. **Local flint stone**
sourced by contractor
5. **Rooflights**
by Glazing Vision
www.glazingvision.co.uk
6. **Shaped brick**
to arch and window surrounds by
Michelmersh Brick Holdings
www.mbhplc.co.uk
7. **Kitchen countertop**
Black Quartz, by DuPont Zodiac
www.zodiac.com
8. **Kitchen joinery**
Reclaimed oak
9. **Internal door handles**
Ben Nevis, by Hafele
www.hafele.co.uk
10. **Facing brick**
Red imperial, reclaimed, sourced by
contractor
11. **Creasing tile**
Clay

