

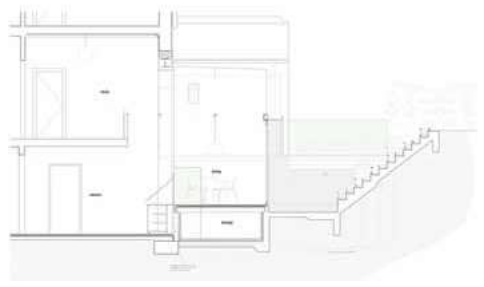
SOUTH HILL PARK – CAMDEN

Situated just off Hampstead Heath in a small enclave of Victorian streets, the project tackles difficult level changes between house and garden by incorporating a glazed double height space at the rear.

This scheme is mostly about the cross section. The usual strategy of connecting house and garden is taken but unusually the scheme connects two floors rather than one. A section of the floor between ground and first floor was removed, creating a fully glazed space offering wide open views out into the garden.

Some of the house was brought up to the garden, and some of the garden down to the house. Cutting down and stepping the garden avoids the balustrade cutting across the view, and the steps are utilised for seats and planters.

The interior space is stepped up from the kitchen so that the dining space is on the same level as the exterior. This interlocking space becomes the focal point of the house and allows all the living spaces to have a relationship with each other. The lower front living space is used as a play space and will become the more informal reception when the kids are older.



Section