



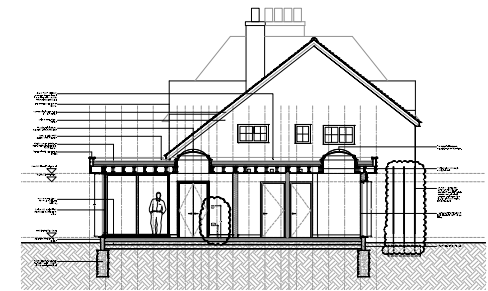
WHITEOAKS

This project included extensive renovation works to an existing cottage with a new single-storey side extension for a growing family.

The new extension provides facilities for using and enjoying the garden including a new side entrance, refuse area, boot room, utility and vegetable preparation area, laundry room, accessible wc, dog shower and a flexible studio/play room space.

At first floor level, a traditional roof extension and dormer have been constructed to provide a new bedroom and also to visually 'complete' the existing cottage. A new children's shower room has been inserted between bedrooms and the layout made more efficient. The existing colder north-facing bedrooms in the cottage have been insulated internally.

To the south elevation there are large areas of glazing on the new extension, with an overhanging eave to prevent excessive overheating in the height of summer. Cool air drawn in through the aluminium windows exits through the opening roof lights in summer. Windows have been positioned at heights suited to the activities taking place within i.e. desk height, kitchen unit height or standing height.



Section

COMPLETED: **DECEMBER 2010** PROJECT VALUE: **£250,000** ARCHITECT: **HUT** CONTRACTOR: **SOLIDOAK CONSTRUCTION**
ENGINEER: **HARDMAN STRUCTURAL ENGINEERS** LANDSCAPE: **ANDREW JACKSON GARDEN DESIGN** IMAGE CREDITS: **JIM POTTER**

